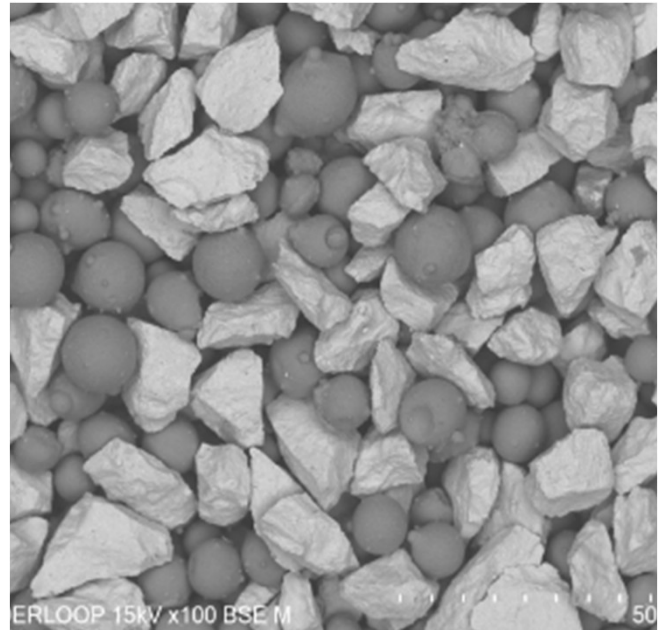




CTC-40%NiCrBSi Blend (P-CTC40NiCrBSi)

Product Features

Blend of crushed cast tungsten carbide and 40% by weight nickel brazing alloy powder. This specialised hardfacing material is designed for extreme wear protection. The nickel-based alloy (NiCrBSi) provides a tough, corrosion-resistant matrix that holds the hard tungsten carbide particles in place while resists cracking (high impact resistance). The powder can be applied using Plasma Transferred Arc (PTA) welding, laser cladding, HVOF (High-Velocity Oxygen Fuel) spraying, and oxy-acetylene torch surfacing.



Typical Uses and Applications

The blend is extensively used to protect ground-engaging tools, downhole tools, stabilizers, and wear-resistant valve components against severe abrasive and erosive wear.

Chemical Composition

	W	C	Ni	Cr	B	Si	Fe
60%CTC	Bal.	3.6-4.2	-	-	-	-	-
40%NiCrBSi	-	<0.5	Bal.	12-14	2-3	3-4	3-4

Ni brazing alloy composition can be altered on request.

Physical Characteristics

	Manufacturing method	Nominal particle size (μm)	Typical flow rate (s/50g)	Typical apparent density (g/cm^3)
CTC	Cast & Crushed	45-150	-	-
NiCrBSi	Gas atomised	45-150	11.9	6.1

Other size on request

Address: Powderloop Technology Ltd
40 Warner Drive
Springwood Industrial Estate
Braintree CM7 2YW
United Kingdom

Telephone: +44 7477 552959
Email: sales@powderloop.com
Website: www.powderloop.com
Registration no.: GB 13891248
VAT no.: GB 444774273000